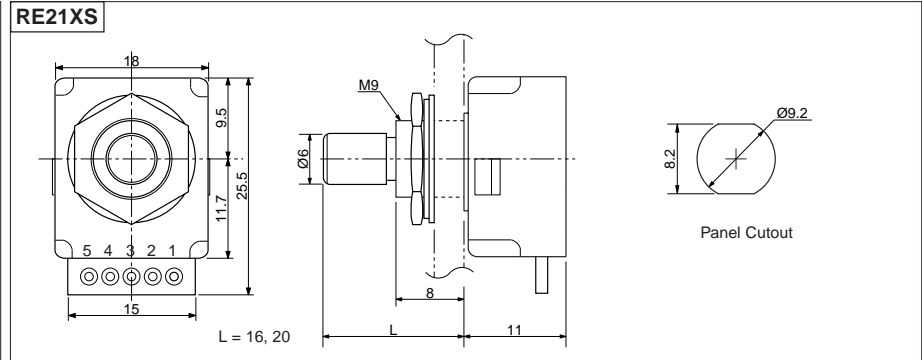
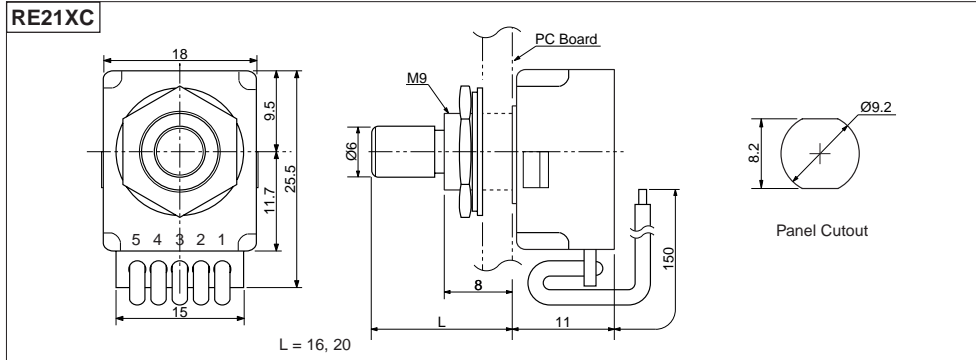
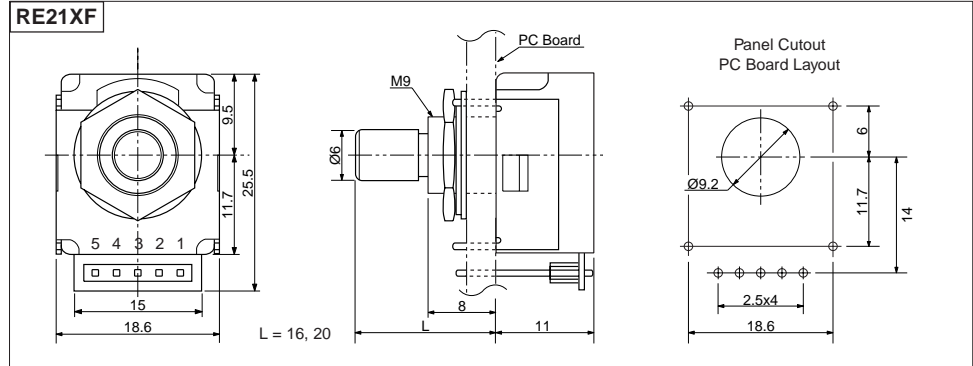


# Panel Mount Encoder

## RE21

### INTEGRAL PUSH SWITCH

- PUSH SWITCH
- LOW COST
- LONG LIFE
- LOW PROFILE
- DETENT OR FREE
- SHAFT SEAL OPTION
- DURABLE
- IN STOCK NOW



#### SPECIFICATIONS

##### ELECTRICAL

- Input Power: 5.0 VDC  $\pm 5\%$  @ 20mA
- Output Voltage: H = Vcc- 0.5V  
L  $\pm$  0.4V
- Resolution: 25 PPR
- Output Type: TTL Compatible
- Max. Freq. Response: 500 Hz

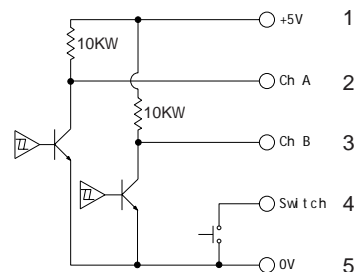
##### MECHANICAL

- Max Shaft Load, radial: 5.0 kgf  
axial: 5.0 kgf
- Rotational Angle: 360° continuous
- Click Torque: 30~70 gf•cm
- Rotational Life: 1,000,000 cycles

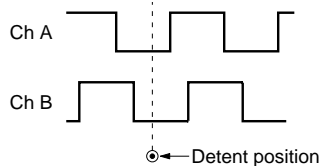
##### ENVIRONMENTAL

- Operating Temp: 0° to +60° C
- Storage Temp: -20° to +80° C
- Humidity:  $\pm$ 85% RH, no condensation
- Vibration: 10~55 Hz, 1.5 mm, 2 hrs
- Shock: 50G, 6ms, 3 axes, 3 reps

#### OUTPUT CIRCUIT



#### OUTPUT WAVEFORM



#### ORDERING INSTRUCTIONS

RE21   25    R

N = Not waterproof  
P = Waterproof

Body Type:  
C = Cable type  
F = Front mounting  
S = Standard

Shaft Length:  
16 = 16mm  
20 = 20mm

Detent:  
C = Click  
= No Click

Resolution:  
25 = 25 Cycles

CUI Devices 6405 SW Rosewood St, Suite C Lake Oswego, OR 97035 www.cuidevices.com			
DRAWN BY	UPDATED	CHECKED	RELEASED
JRH	09/01/20	09/01/20	
PART NO.			REV.
RE21XX25XXR			B