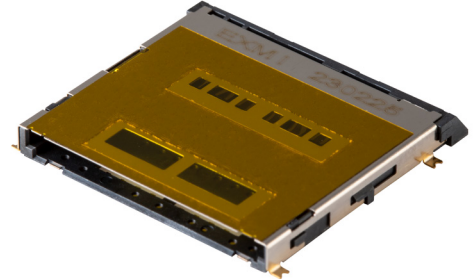


**MODEL:** SD4-3-B | **DESCRIPTION:** SD 4.0 CARD CONNECTOR**FEATURES**

- SD 4.0 card connector
- push in, pull out
- card detect switch
- gold flash
- surface mount
- UL94V-0

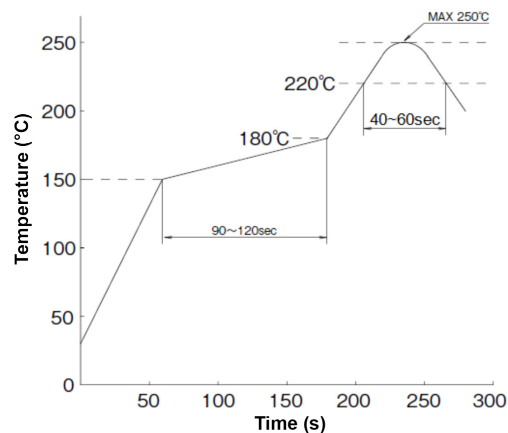
**SPECIFICATIONS**

| parameter                       | conditions/description                  | min   | typ   | max | units  |
|---------------------------------|---|-------|-------|-----|--------|
| rated voltage                   |   |       |       | 30  | V      |
| rated current                   |   |       |       | 0.5 | A      |
| contact resistance <sup>1</sup> |   |       |       | 100 | mΩ     |
| insulation resistance           | at 500 Vdc, between adjacent circuits   | 1,000 |       |     | MΩ     |
| voltage withstand               | for 1 minute, between adjacent circuits |       | 100   |     | Vac    |
| insertion force                 | at a rate of 25 mm/min                  |       |       | 10  | N      |
| withdrawal force                | at a rate of 25 mm/min                  | 0.5   |       |     | N      |
| life                            |   |       | 5,000 |     | cycles |
| operating temperature           |   | -40   |       | 85  | °C     |
| flammability rating             | UL94V-0                                 |       |       |     |        |
| RoHS                            | yes                                     |       |       |     |        |

Note: 1. When measured at 20 mV / 100 mA.

**SOLDERABILITY**

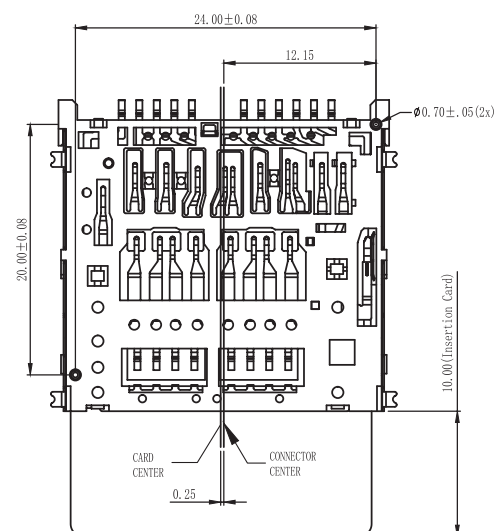
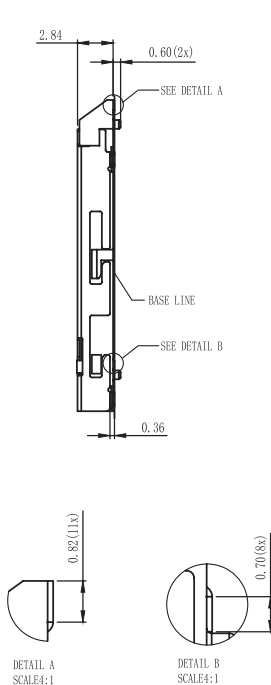
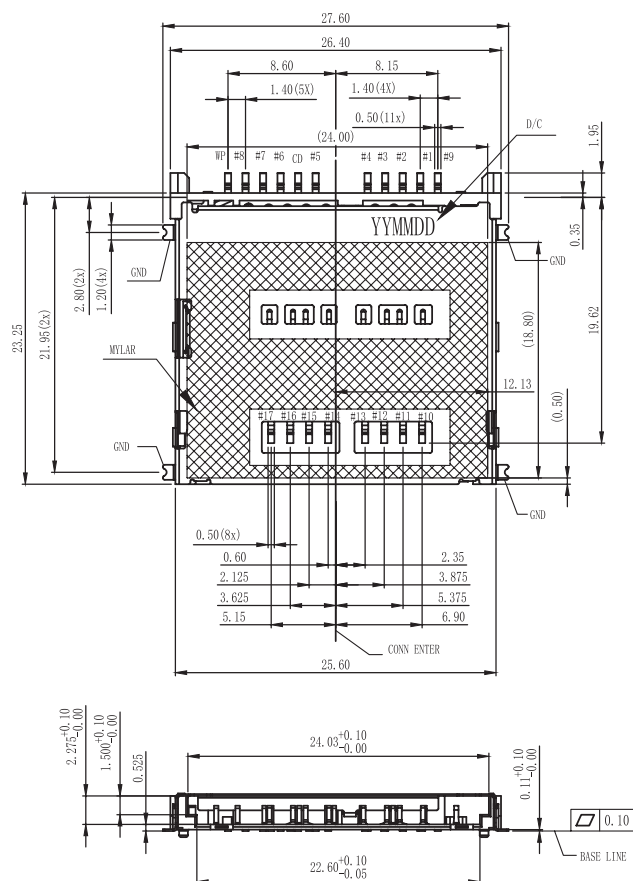
| parameter        | conditions/description   | min | typ | max | units |
|------------------|--|-----|-----|-----|-------|
| reel storage     | at relative humidity 40~70%<br>reel opened: use within 1 month<br>reel unopened: up to 15 month shelf life | 16  | 22  | 28  | °C    |
| reflow soldering | see reflow profile   |     |     | 250 | °C    |



## MECHANICAL DRAWING

units: mm  
 tolerance:  
 X.X  $\pm 0.38$  mm  
 X.XX  $\pm 0.25$  mm  
 X.XXX  $\pm 0.10$  mm  
 unless otherwise specified

| DESCRIPTION       | MATERIAL                       | PLATING/COLOR   |
|-------------------|--------------------------------|---|
| housing           | LCP [UL94V-0]                  | black   |
| contact terminals | phosphor bronze<br>$t=0.12$ mm | contact area: gold<br>over nickel<br>solder area: gold<br>flash over nickel       |
| cover             | SUS304 $t=0.15$ mm             | contact area: gold<br>flash over nickel<br>solder area: gold<br>flash over nickel |

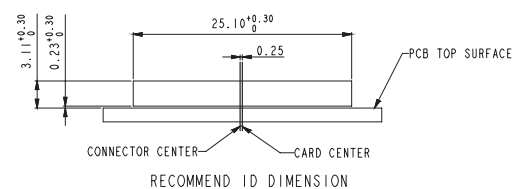
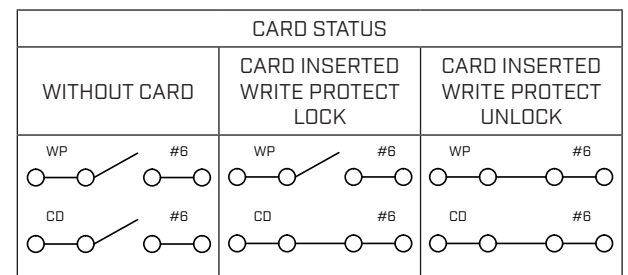
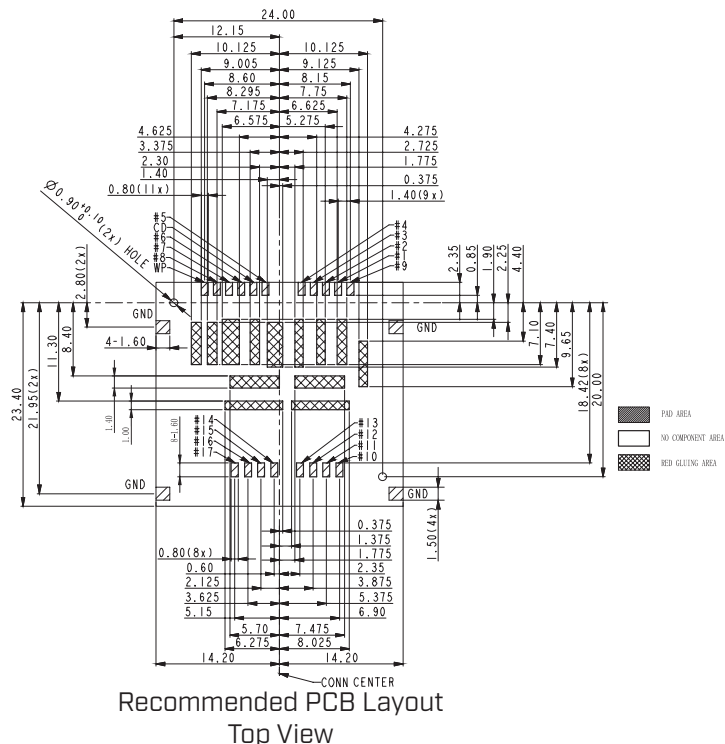


## MECHANICAL DRAWING (CONTINUED)

units: mm

PCB tolerance:  $\pm 0.05$  mm

| PIN CONNECTIONS |             |        |                               |             |      |                        |
|-----------------|-------------|--------|-------------------------------|-------------|------|------------------------|
| PIN#            | SD MODE     |        |                               | UHS-II MODE |      |                        |
|                 | SIGNAL NAME | TYPE   | DESCRIPTION                   | SIGNAL NAME | TYPE | DESCRIPTION            |
| 9               | DAT2        | I/O/PP | DATA LINE [BIT 2]             | -           | -    | NOT USED               |
| 1               | CD/DAT3     | I/O/PP | CARD DETECT/DATA LINE [BIT 3] | -           | -    | NOT USED               |
| 2               | CMD         | PP     | COMMAND/RESPONSE              | -           | -    | NOT USED               |
| 3               | VSS1        | S      | SUPPLY VOLTAGE GROUND         | VSS1        | S    | SUPPLY VOLTAGE GROUND  |
| 4               | VDD         | S      | SUPPLY VOLTAGE                | VDD1        | S    | SUPPLY VOLTAGE [3.3 V] |
| 5               | CLK         | I      | CLOCK                         | -           | -    | NOT USED               |
| CD              | CD          | -      | CARD DETECT SWITCH            | CD          | -    | CARD DETECT SWITCH     |
| 6               | VSS2        | S      | SUPPLY VOLTAGE GROUND         | VSS2        | S    | SUPPLY VOLTAGE GROUND  |
| 7               | DAT0        | I/O/PP | DATA LINE [BIT 0]             | RCLK+       | I    | RCLK+                  |
| 8               | DAT1        | I/O/PP | DATA LINE [BIT 1]             | RCLK-       | I    | RCLK-                  |
| WP              | WP          | -      | WRITE PROTECT                 | WP          | -    | WRITE PROTECT          |
| 10              | -           | -      | NOT USED                      | VSS3        | S    | SUPPLY VOLTAGE GROUND  |
| 11              | -           | -      | NOT USED                      | DO+         | LVDS | DO+                    |
| 12              | -           | -      | NOT USED                      | DO-         | LVDS | DO-                    |
| 13              | -           | -      | NOT USED                      | VSS4        | S    | SUPPLY VOLTAGE GROUND  |
| 14              | -           | -      | NOT USED                      | VDD2        | S    | SUPPLY VOLTAGE [1.8 V] |
| 15              | -           | -      | NOT USED                      | D1-         | LVDS | D1-                    |
| 16              | -           | -      | NOT USED                      | D1+         | LVDS | D1+                    |
| 17              | -           | -      | NOT USED                      | VSS5        | S    | SUPPLY VOLTAGE GROUND  |
| GND             | -           | -      | COVER GROUND                  | -           | -    | COVER GROUND           |

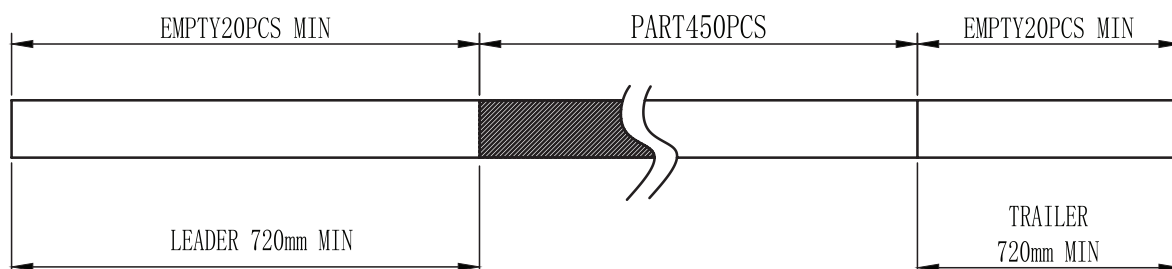
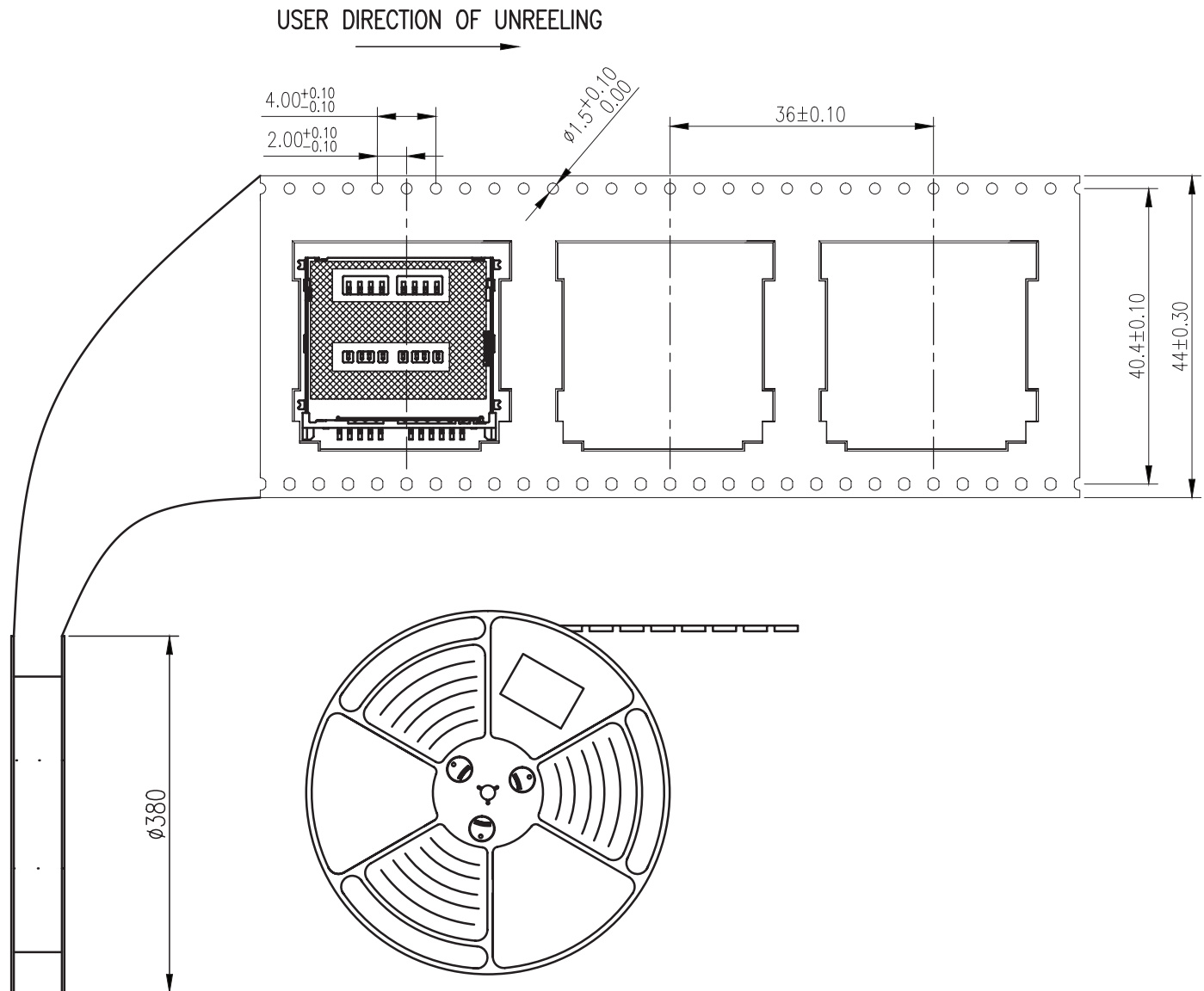


## PACKAGING

units: mm

Reel Size:  $\varnothing 380$  mm

Reel QTY: 450 pcs per reel



## REVISION HISTORY

| rev. | description     | date       |
|------|-----------------|------------|
| 1.0  | initial release | 10/26/2023 |

The revision history provided is for informational purposes only and is believed to be accurate.



CUI Devices offers a one (1) year limited warranty. Complete warranty information is listed on our website.

CUI Devices reserves the right to make changes to the product at any time without notice. Information provided by CUI Devices is believed to be accurate and reliable. However, no responsibility is assumed by CUI Devices for its use, nor for any infringements of patents or other rights of third parties which may result from its use.

CUI Devices products are not authorized or warranted for use as critical components in equipment that requires an extremely high level of reliability. A critical component is any component of a life support device or system whose failure to perform can be reasonably expected to cause the failure of the life support device or system, or to affect its safety or effectiveness.

**cuidevices.com**